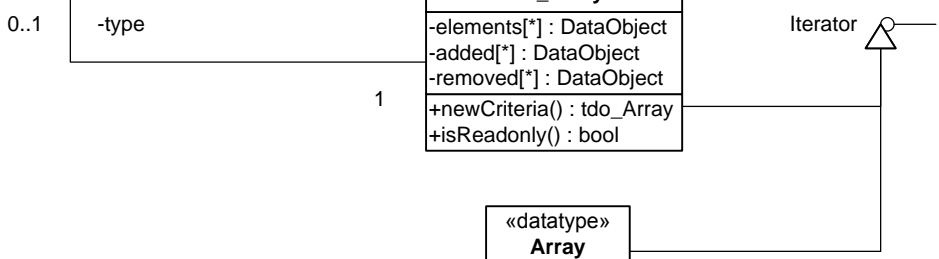
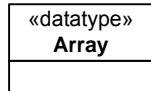
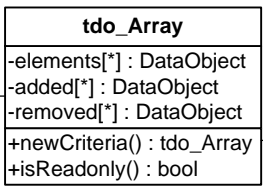
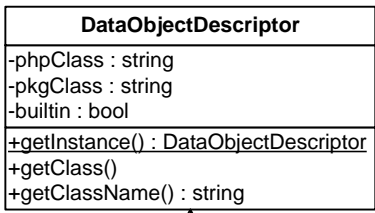
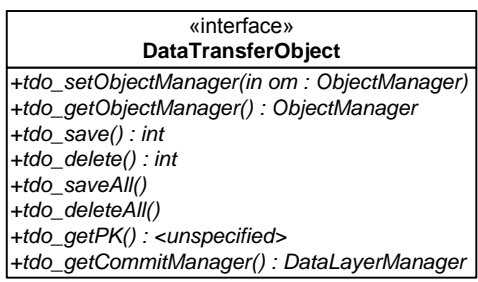
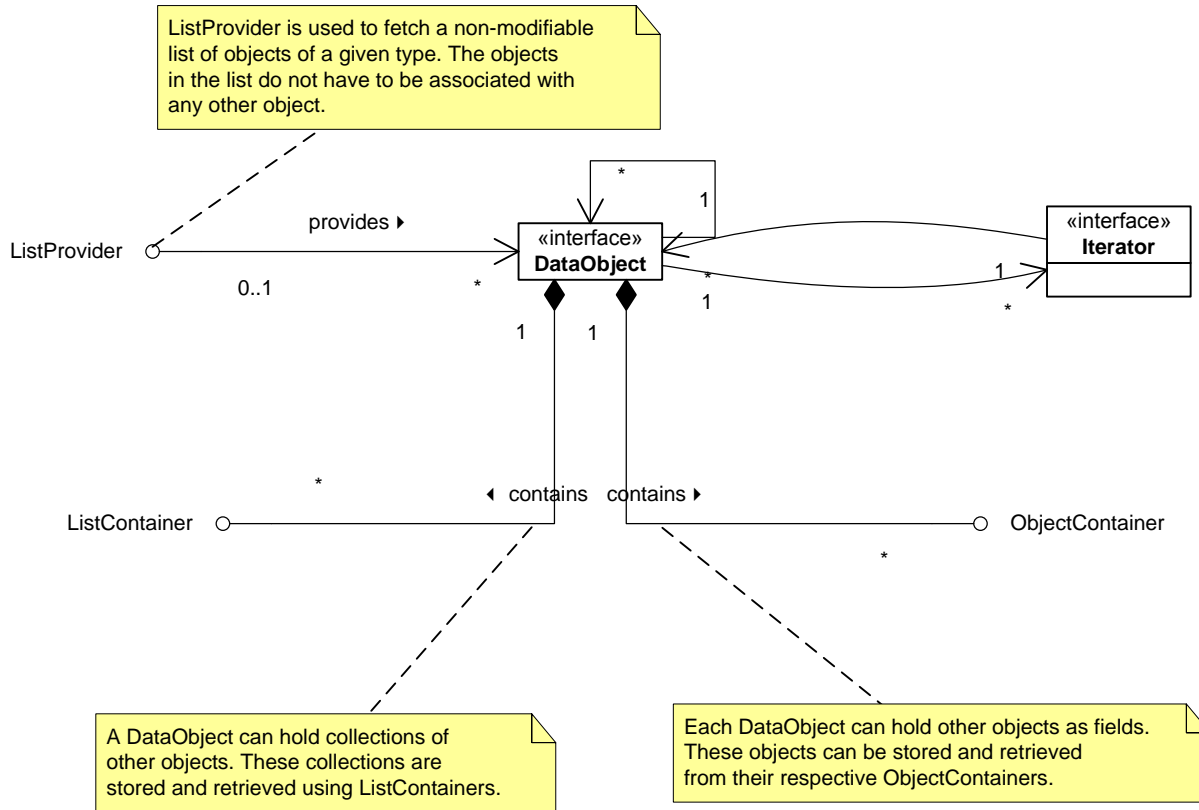
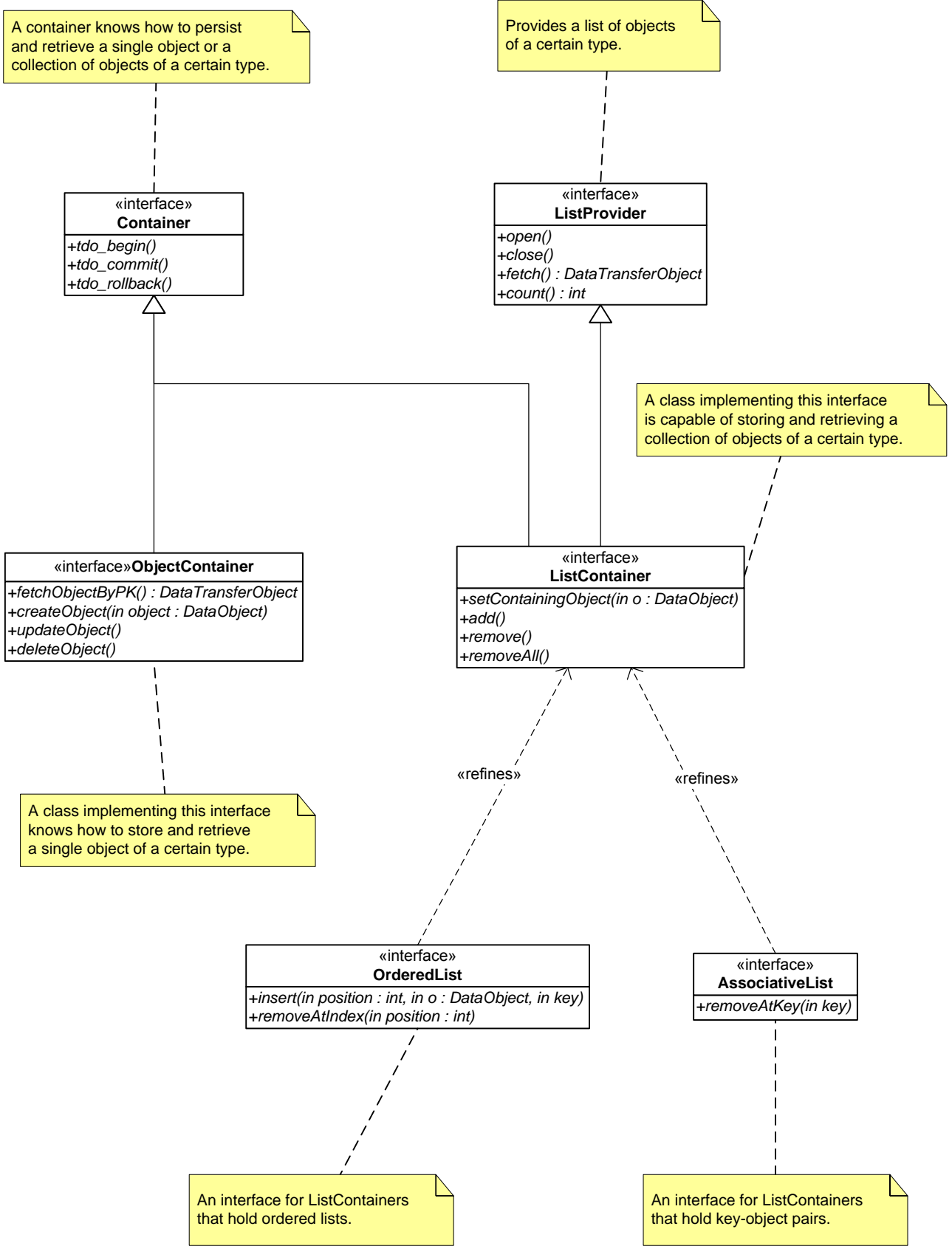
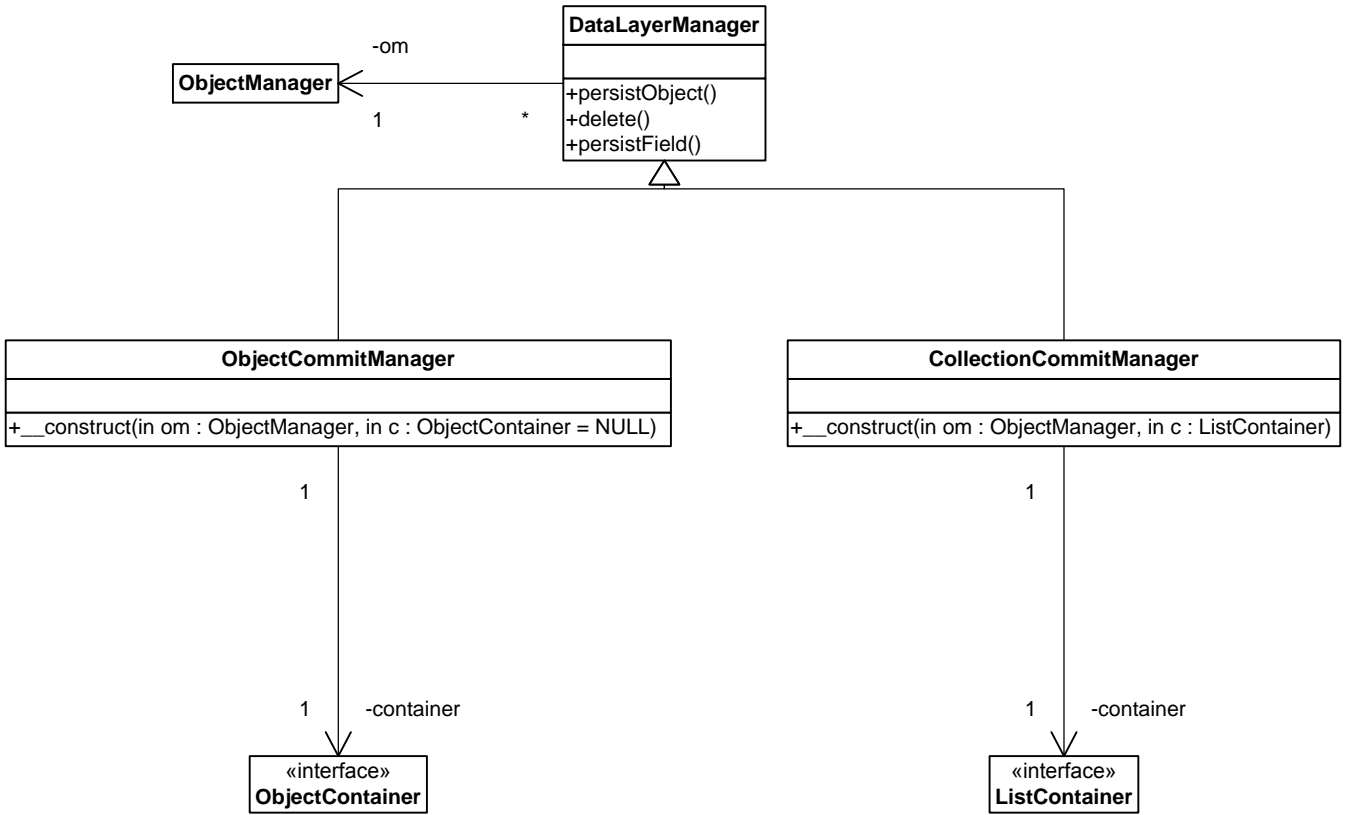


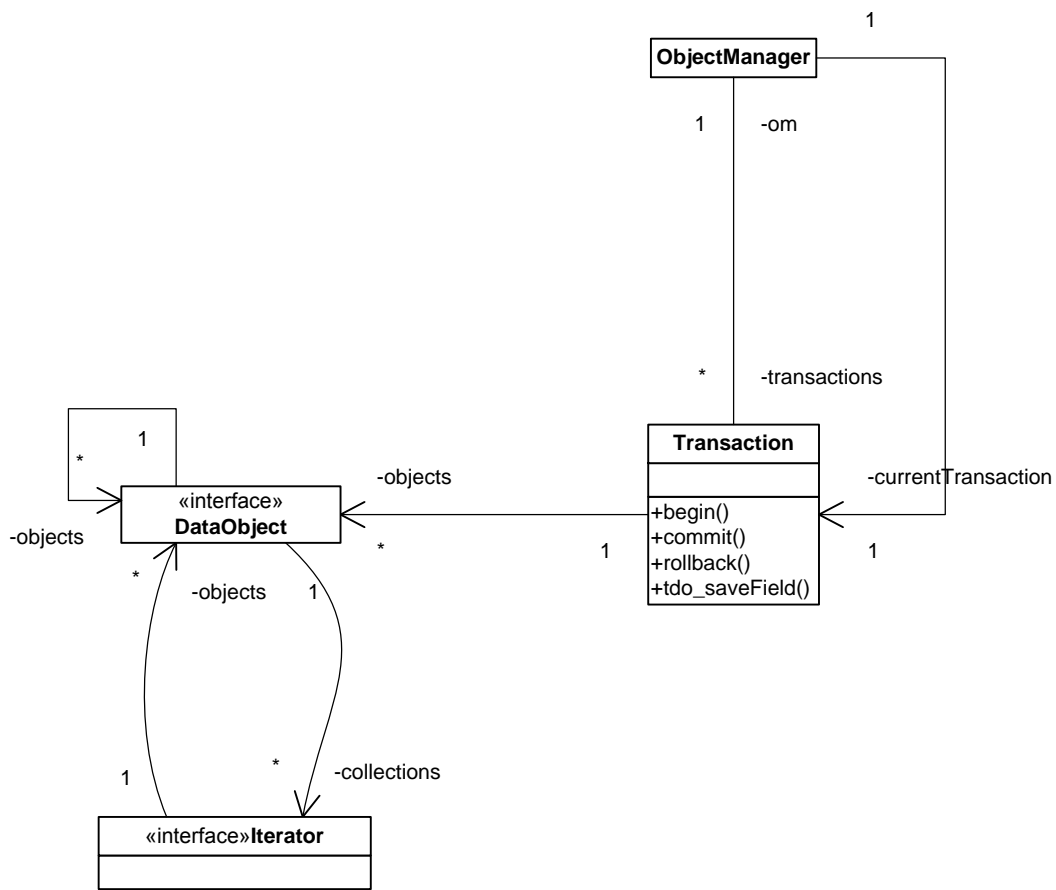
DataObjects may implement a static tdo_construct() method instead of a default constructor.

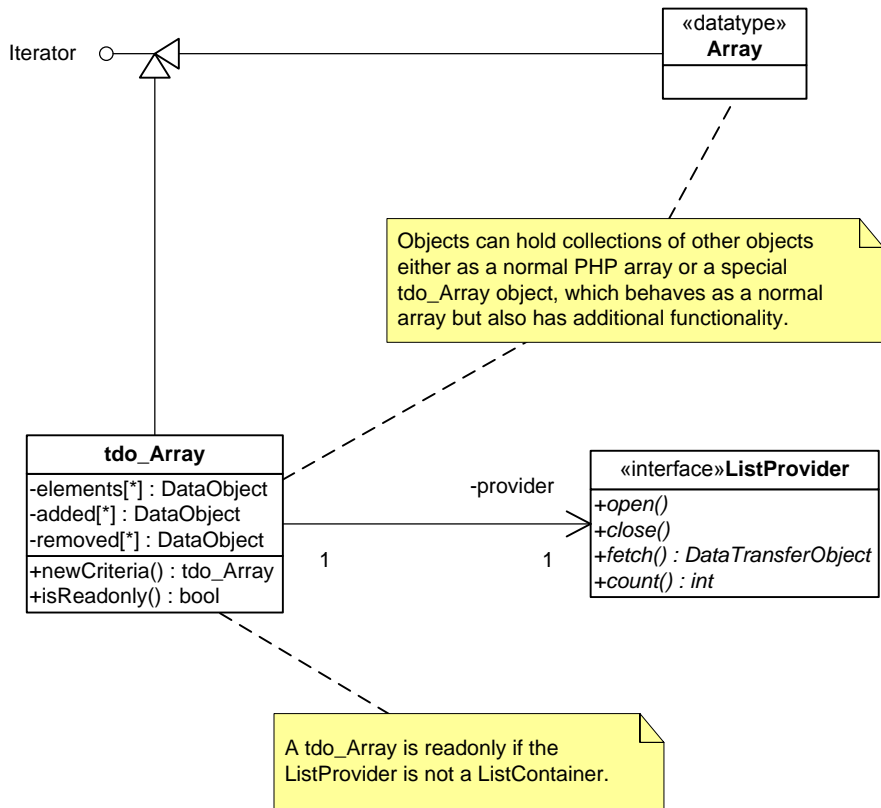




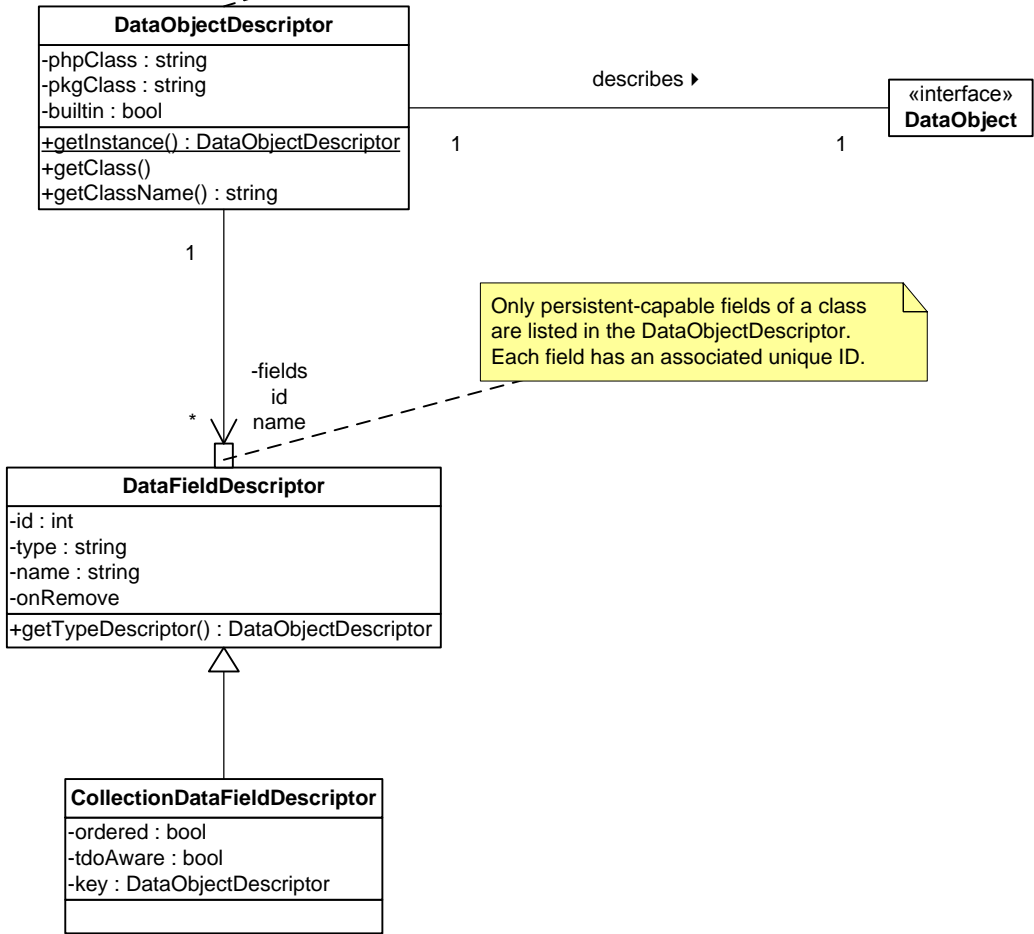






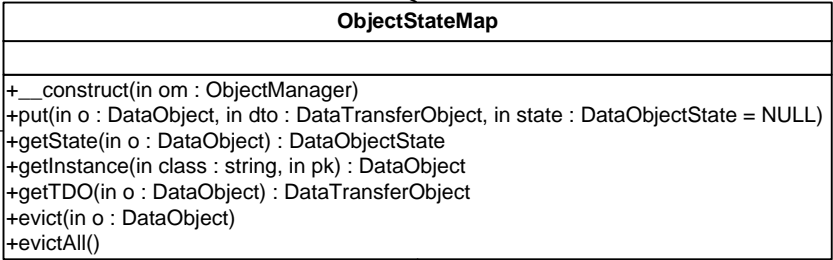


Each persistent-capable class has an associated DataObjectDescriptor which holds information about the properties of this class.



Only persistent-capable fields of a class are listed in the DataObjectDescriptor. Each field has an associated unique ID.

Holds the persistence state of all objects, references to object instances and last values from the datasource for rollback.



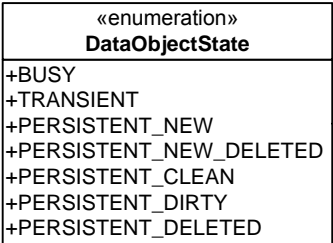
ObjectManager

-objectStates

1

1

The current persistence state of the object.



-state

1

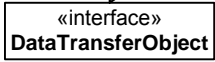
ObjectState

-pk

-objectState
object
class
pk

1

Holds the most recent set of values for this object as loaded or updated in the datasource. This DTO is used to fill the object instance when a rollback of a transaction takes place.

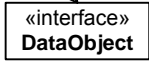


-storeDto

1

{DataObject, class+pk}

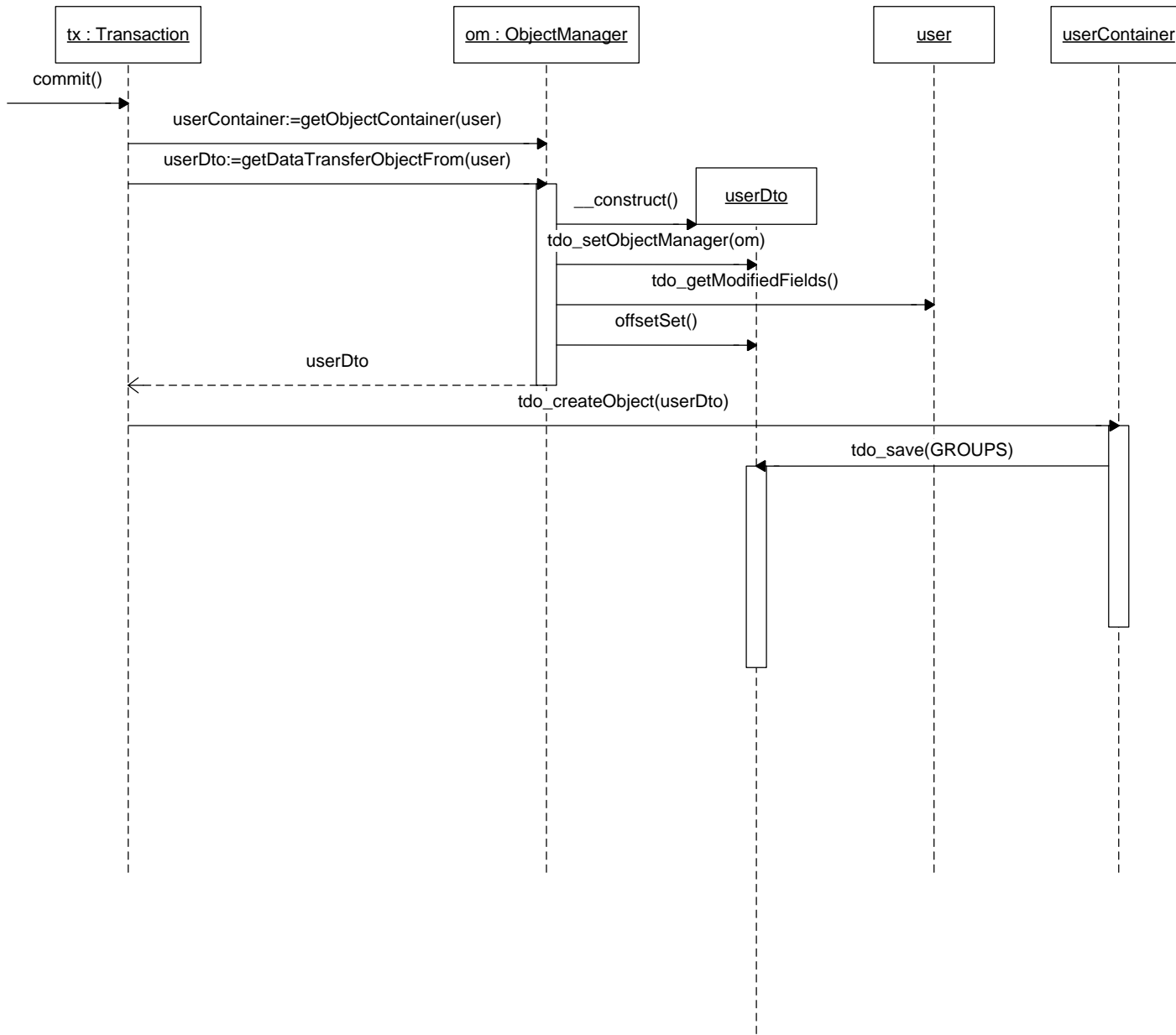
A reference to the object instance.

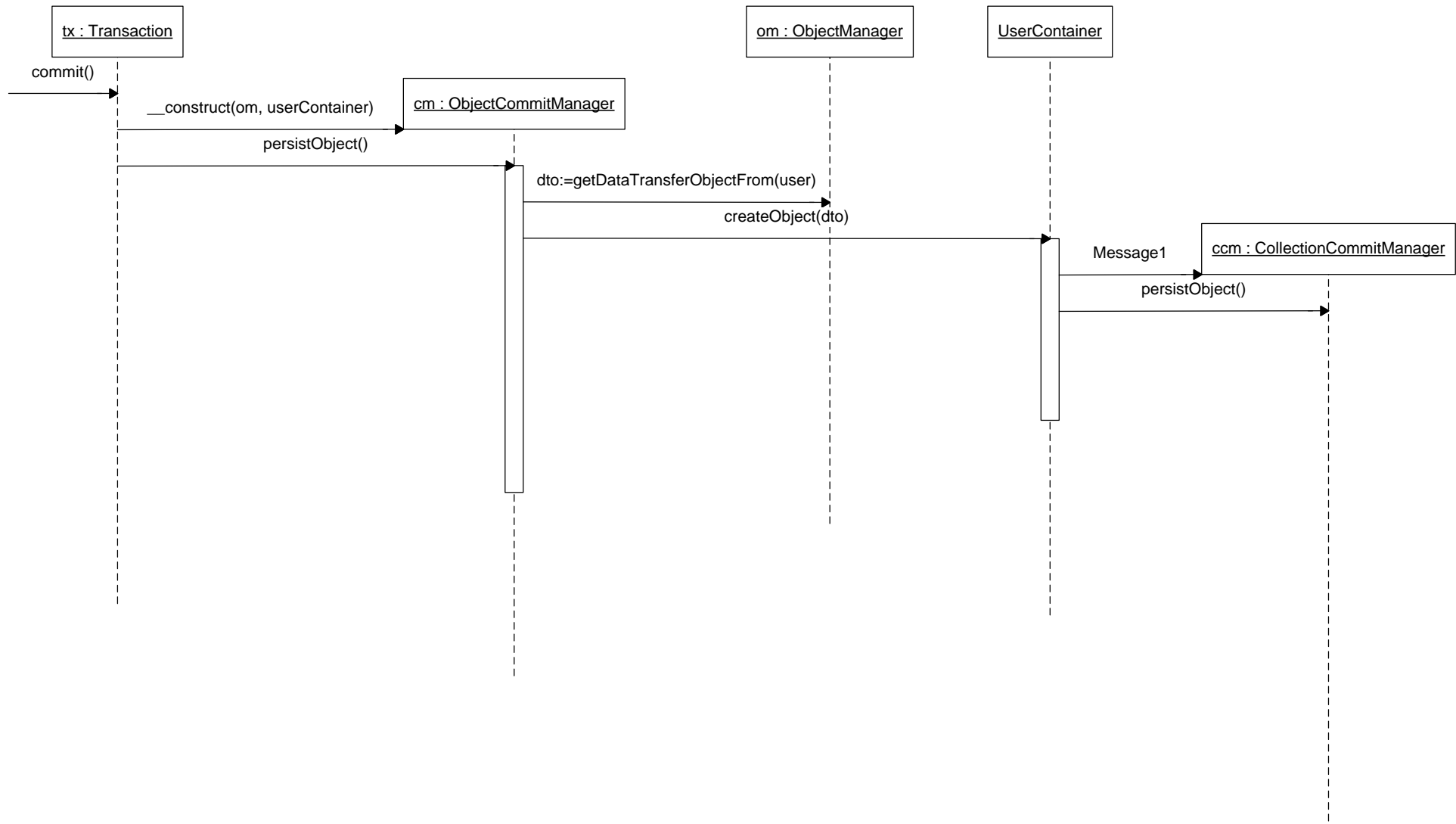


-instance

1

This is an inner class of the ObjectStateMap class. It could be represented by a simple array in the implementation.





om : ObjectManager

Object1

loadObjectByPK:=loadObjectByPK(Blog, 12,)

